

COLUMBIA HIGH SCHOOL RENEWAL



District Goal Four: Resource Management

The South Orange–Maplewood Public Schools will pursue and achieve Goals 1-3 while slowing the rate of increase in operating expenditures.

Objective B: Well-maintained and safe facilities that enable focused and effective teaching and learning, and that are repaired and updated in an architecturally sensitive and fiscally responsible manner.

Indicator 1: A capital plan that extends to 2025.

Milestone 2013-14:

Identify priorities and projects within phases for the capital plan, support public engagement, and gain Board of School Estimate (BSE) approval for the first phase .

District-Wide Facility Assessment Performed in 2011-2012

- In April 2011, the Board of Education hired EI Architecture and Engineering firm to analyze all of the District facilities and recommend improvements that would enable SOMSD to meet the educational demands of the 21st century.
- A preliminary report was made in April 2012 and EI continues to work with the District to prioritize capital improvement projects and the recommended phasing of these projects

➤ ***Physical Facility Deficiencies Identified***

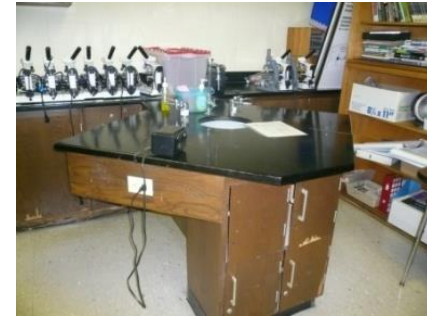
➤ ***Program Space Deficiencies Identified***

➤ ***Deficiencies Categorized into 4 Priority Levels over 15-20 year period***

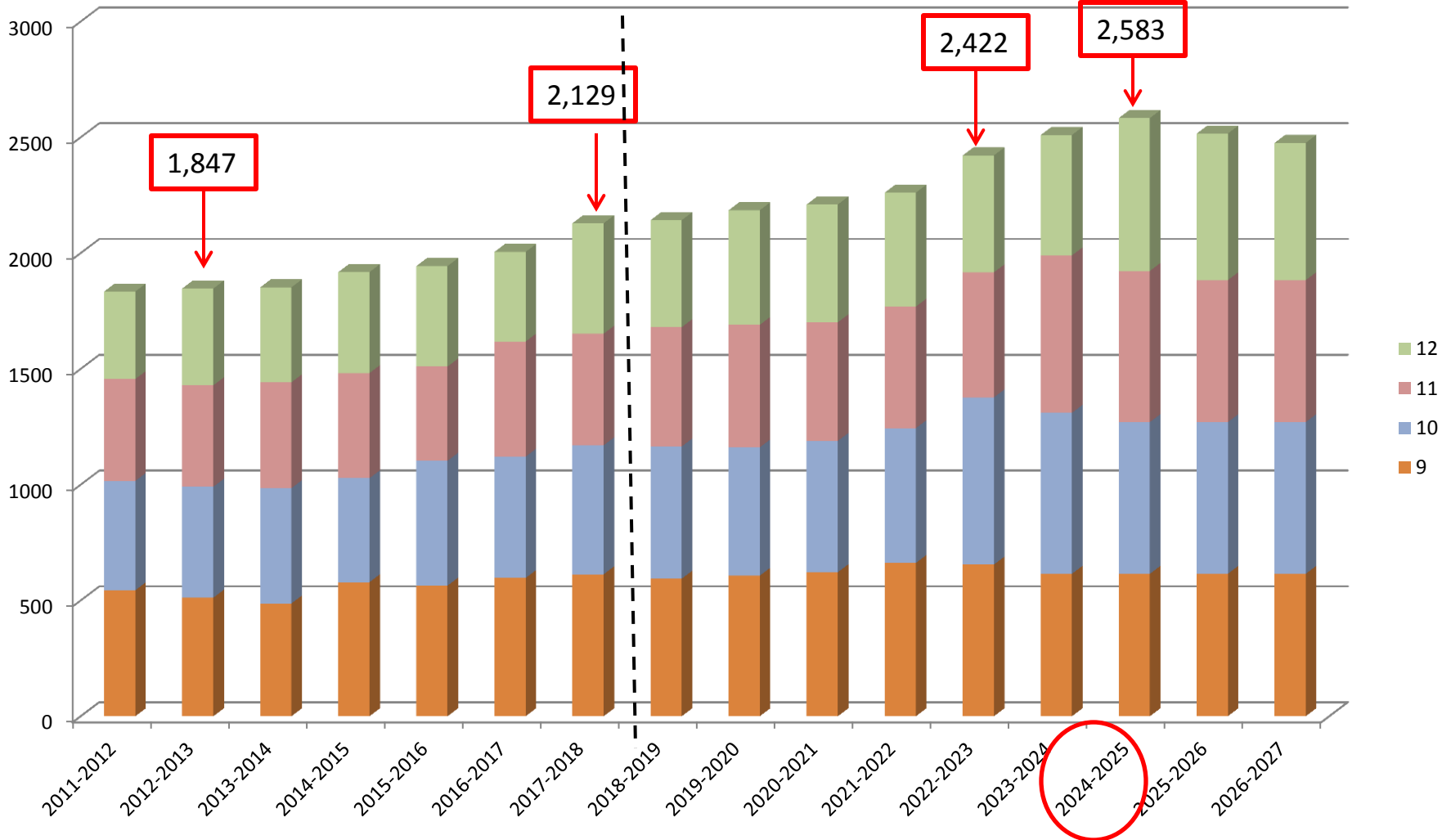
Columbia HS Assessment Summary

Summary of Needs:

- Site Work Improvements
- Building Envelope - Roofs
- Building Envelope – Windows
- Elevator/ADA Upgrades
- Interiors - Casework Upgrades
- Interiors - Finish Upgrades
- Mechanical, Electrical, Plumbing System Upgrades
- Educational Adequacy – Need for Additional Classroom Space (Enrollment Increase)
- Educational Adequacy - Science Laboratory Deficiencies



Enrollment Data - CHS



Columbia High School

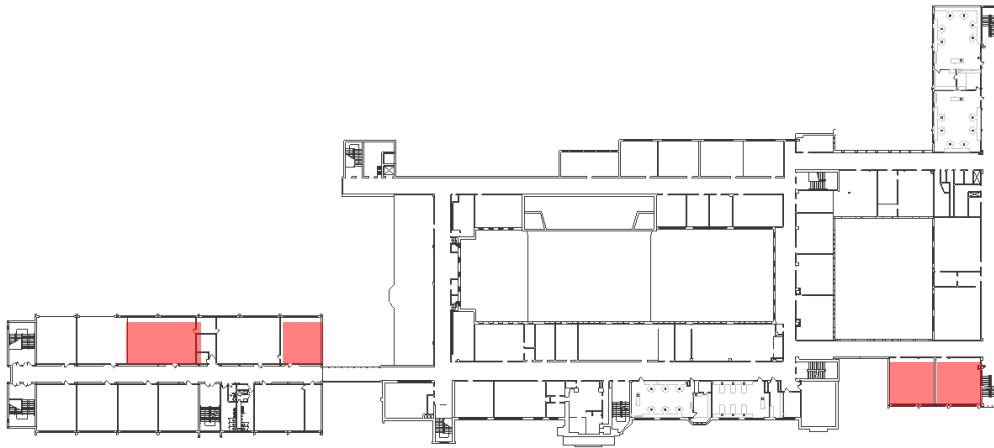
Facility Renewal Considerations

- Address Projected Student Enrollment Increase
 - 300 Student Enrollment Increase by 2017/2018 School Year
 - Possible 700+ Student Enrollment Bubble in 2024-2025 School Year
- Renovate and Revitalize Infrastructure
 - Address Laboratory Deficiencies
 - Repurpose Underutilized Program Areas
 - Allow for flexibility in instructional delivery
 - Create Organized Structure for Collaboration
 - Create Space for New Curriculum Areas (e.g., robotics)

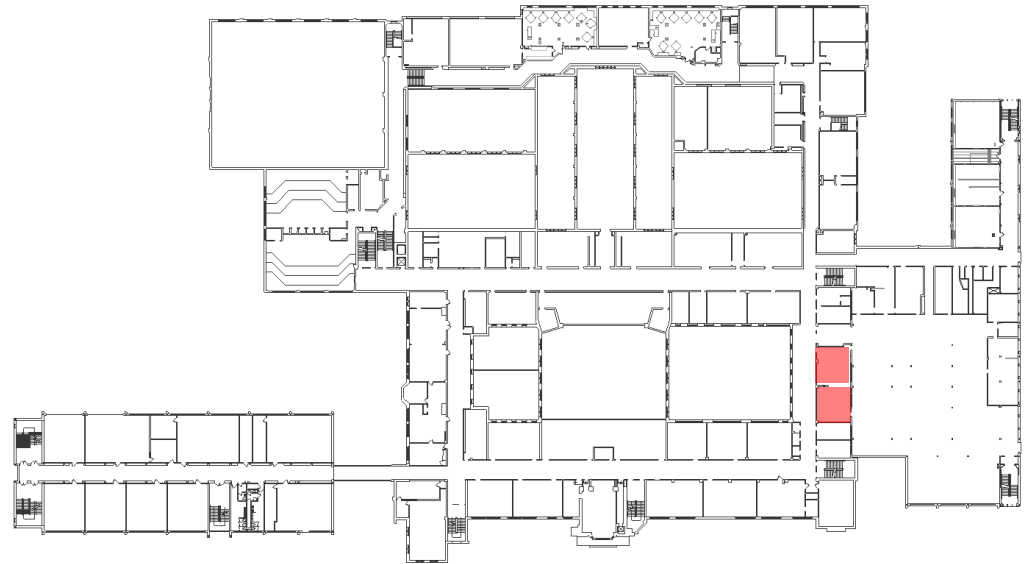
Columbia HS Renewal Plan

Address Projected Student Enrollment Increase

- Convert (6) Computer Labs into (6) Classrooms.



3rd Floor



2nd Floor

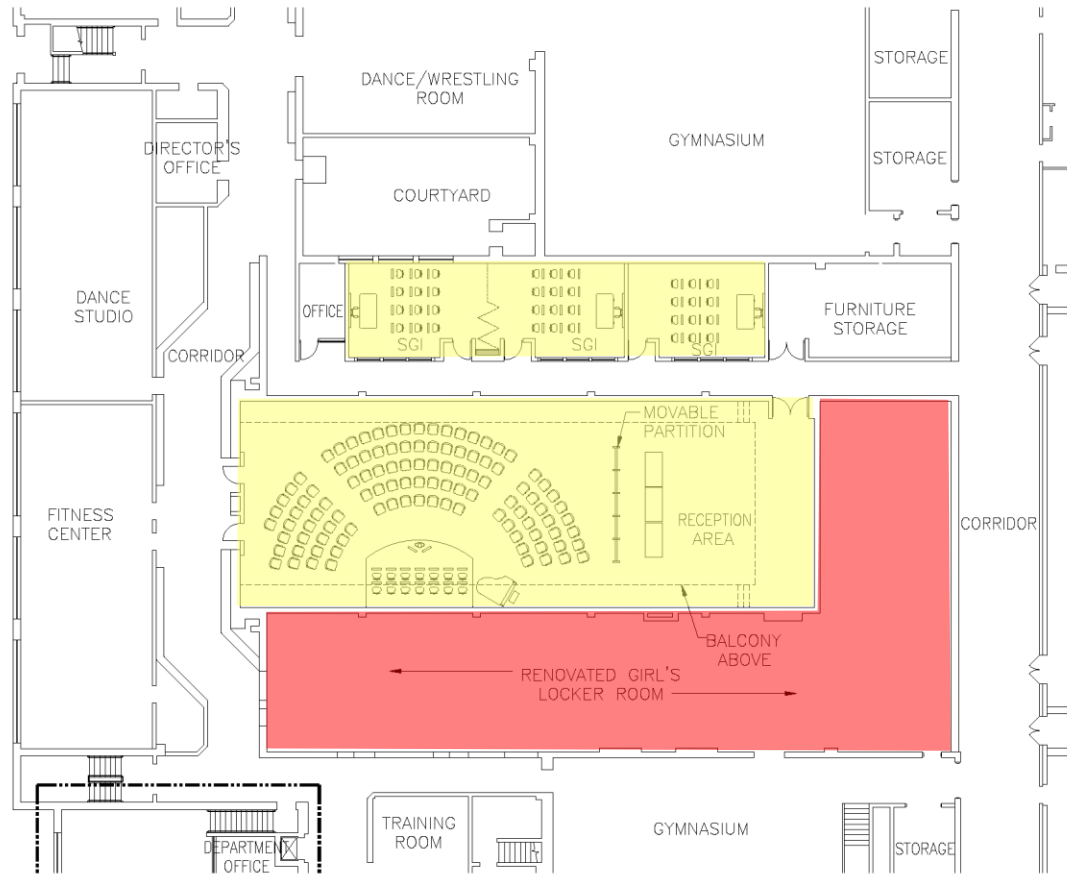


Architects, Engineers, Planners
Single Source Responsibility

Beyond Bricks and Mortar ...
Redefining School Design

Columbia HS Renewal Plan

Renovate and Revitalize Infrastructure: Allow for flexibility in instructional delivery



NEW LARGE GROUP
INSTRUCTIONAL ROOM AND
MULTI-PURPOSE ROOM

C-R3

14 NOVEMBER 2012





Future Updates to Library/Media Center

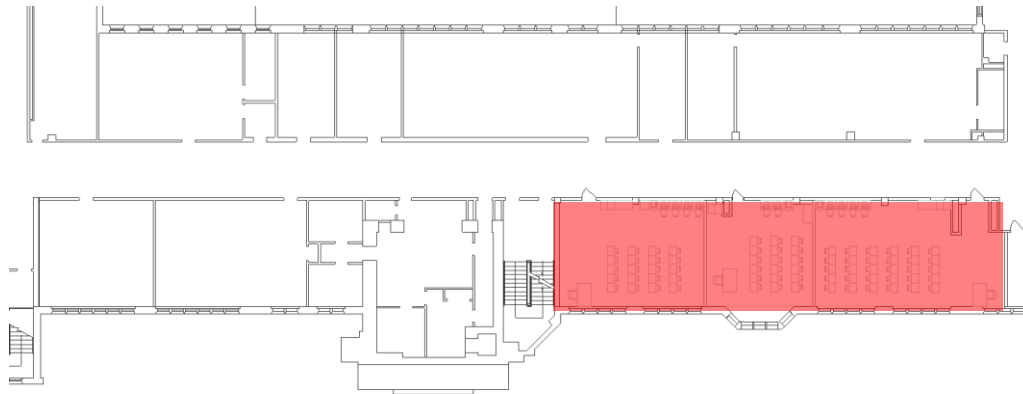
- *Reflect updated use of technology*
- *Group learning space*
- *Independent study spaces*
- *Additional classroom space*
- *Conversion of office*
- *Physical classrooms in current learning spaces*



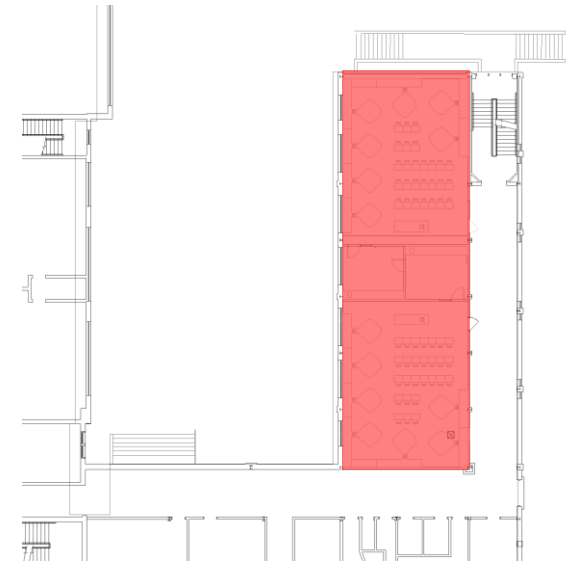
Columbia HS Renewal Plan

Renovate and Revitalize Infrastructure: Address Laboratory Deficiencies

- Relocate 3rd Floor A-Wing Labs to 2nd Floor B-Wing:
 - Convert (3) 2nd Floor B-Wing Classrooms into (2) Biology Labs
 - Convert (2) 3rd Floor A-Wing Labs into (3) General Purpose Classrooms



3rd Floor – A Wing



2nd Floor – B Wing



Architects, Engineers, Planners
Single Source Responsibility

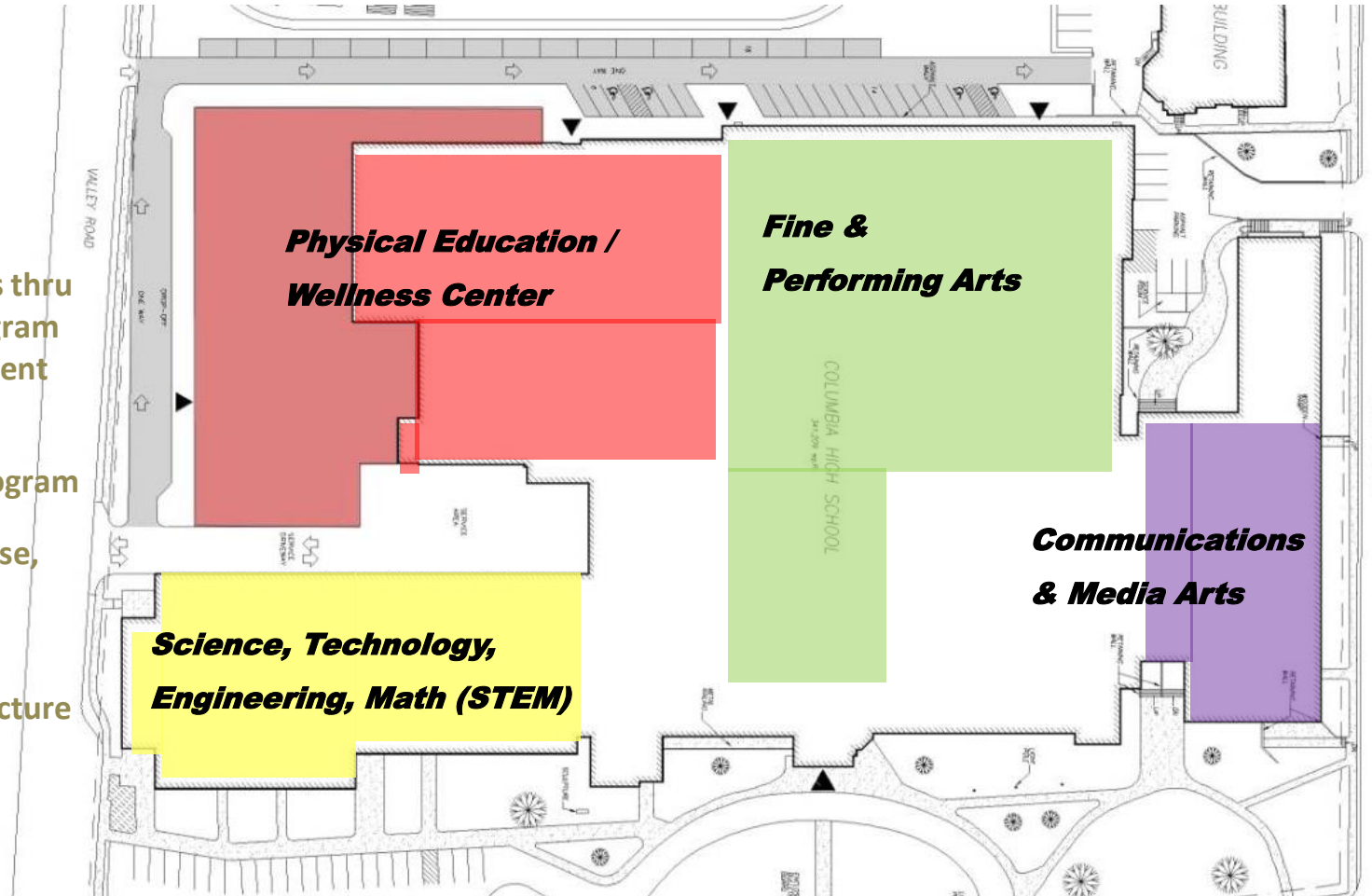
*Beyond Bricks and Mortar ...
Redefining School Design*

Columbia High School

Proposed Master Plan – Per 2012 Assessment Report

Goals:

- Optimize CHS
- Create Efficiencies thru grouping like program areas for department collaboration
- Develop STEM Program
- Strategic Repurpose, Renovations and Additions
- Upgrade Infrastructure



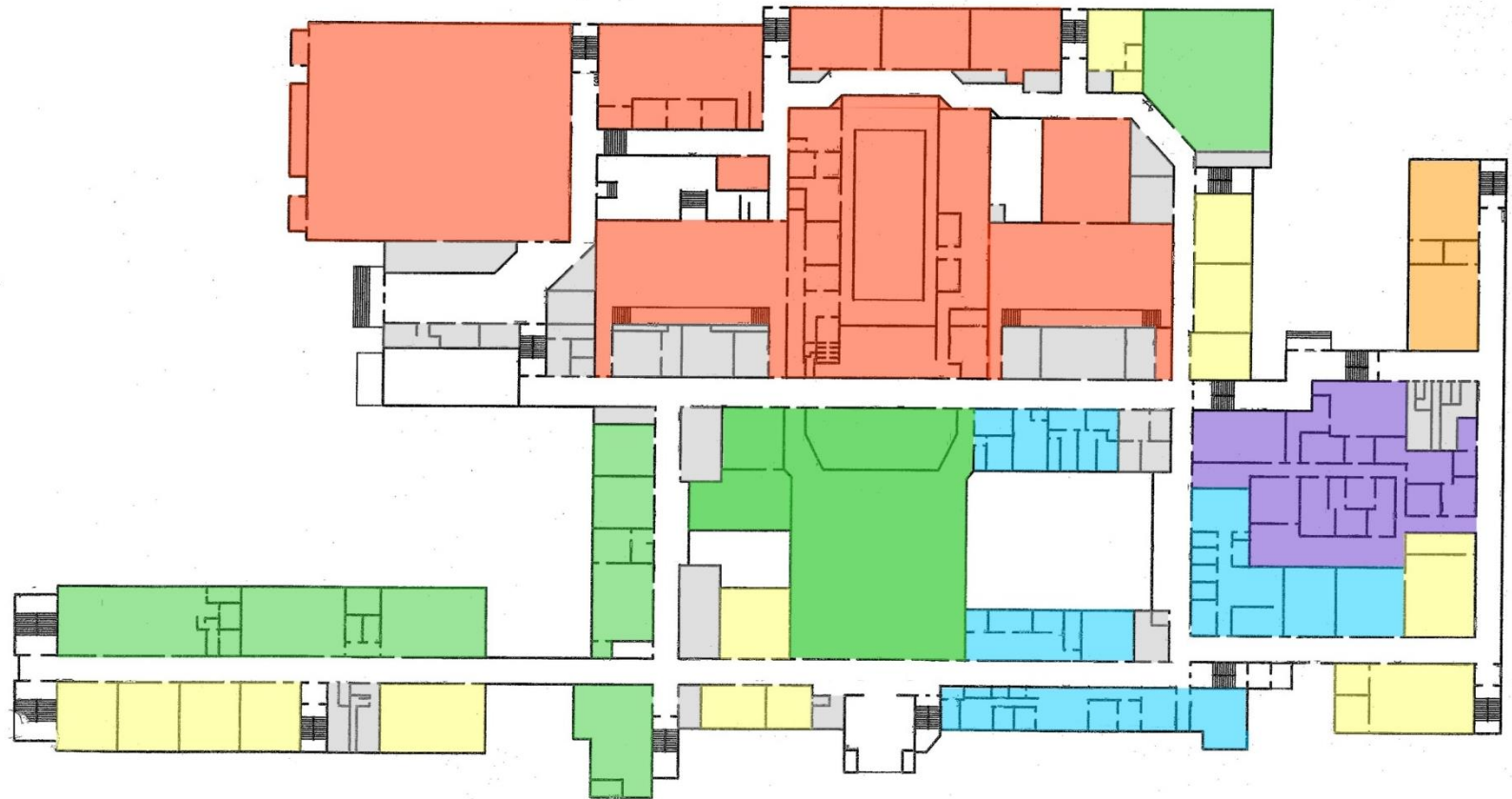
Architects, Engineers, Planners
Single Source Responsibility

*Beyond Bricks and Mortar ...
Redefining School Design*

Create Organized Structure for Collaboration

Columbia High School

Existing First Floor Plan











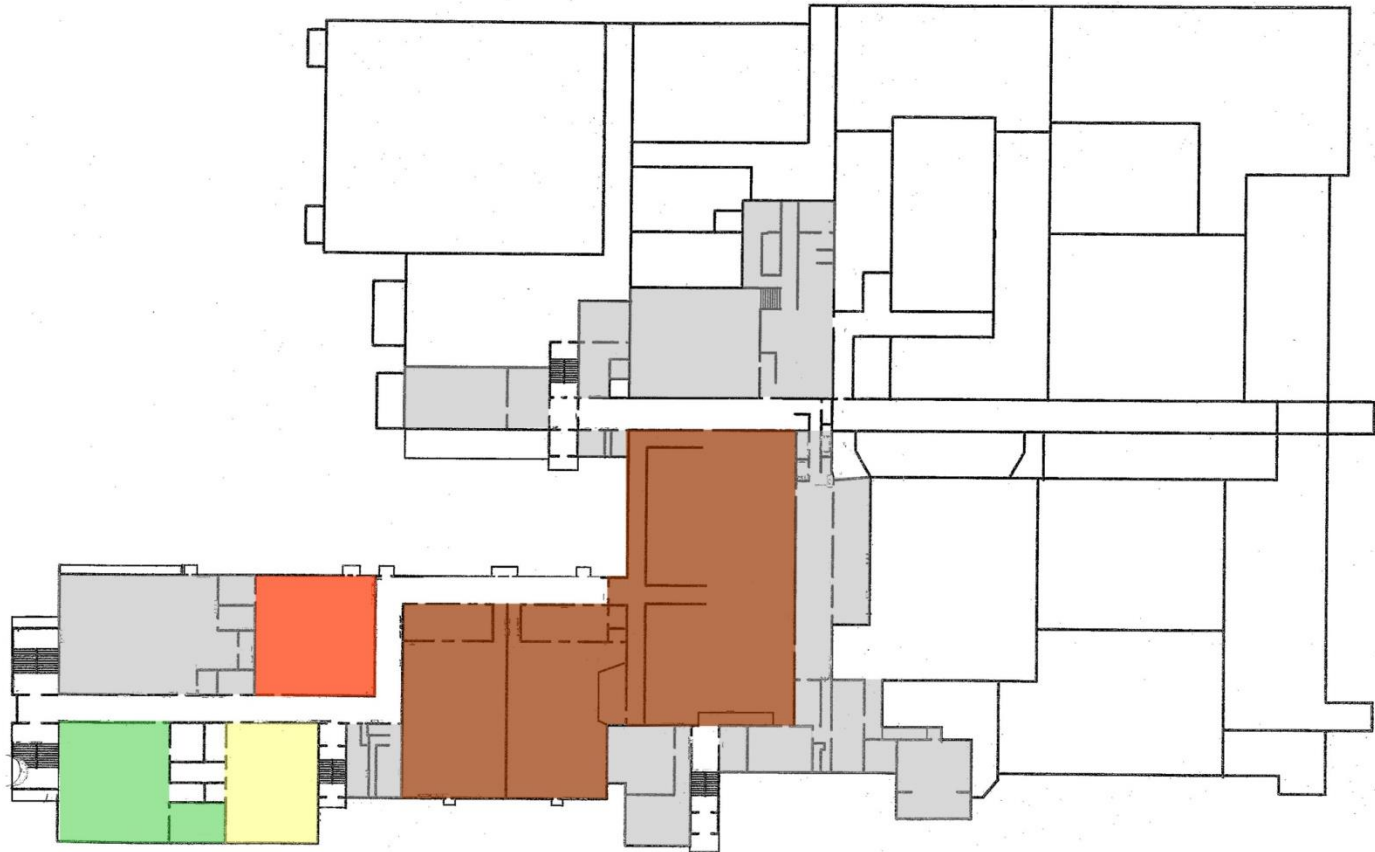
Create Organized Structure for Collaboration

Columbia High School

Existing Lower Level Floor Plan

LEGEND

	NON - INSTRUCTIONAL
	CAFETERIA
	ADMINISTRATION
	VISUAL & PERFORMING ARTS
	COMMUNICATION & MEDIA ARTS
	SCIENCE & TECHNOLOGY
	PHYSICAL EDUCATION
	GENERAL INSTRUCTION



Columbia High School

Ultimate Proposed Master Plan - Lower Level Floor Plan

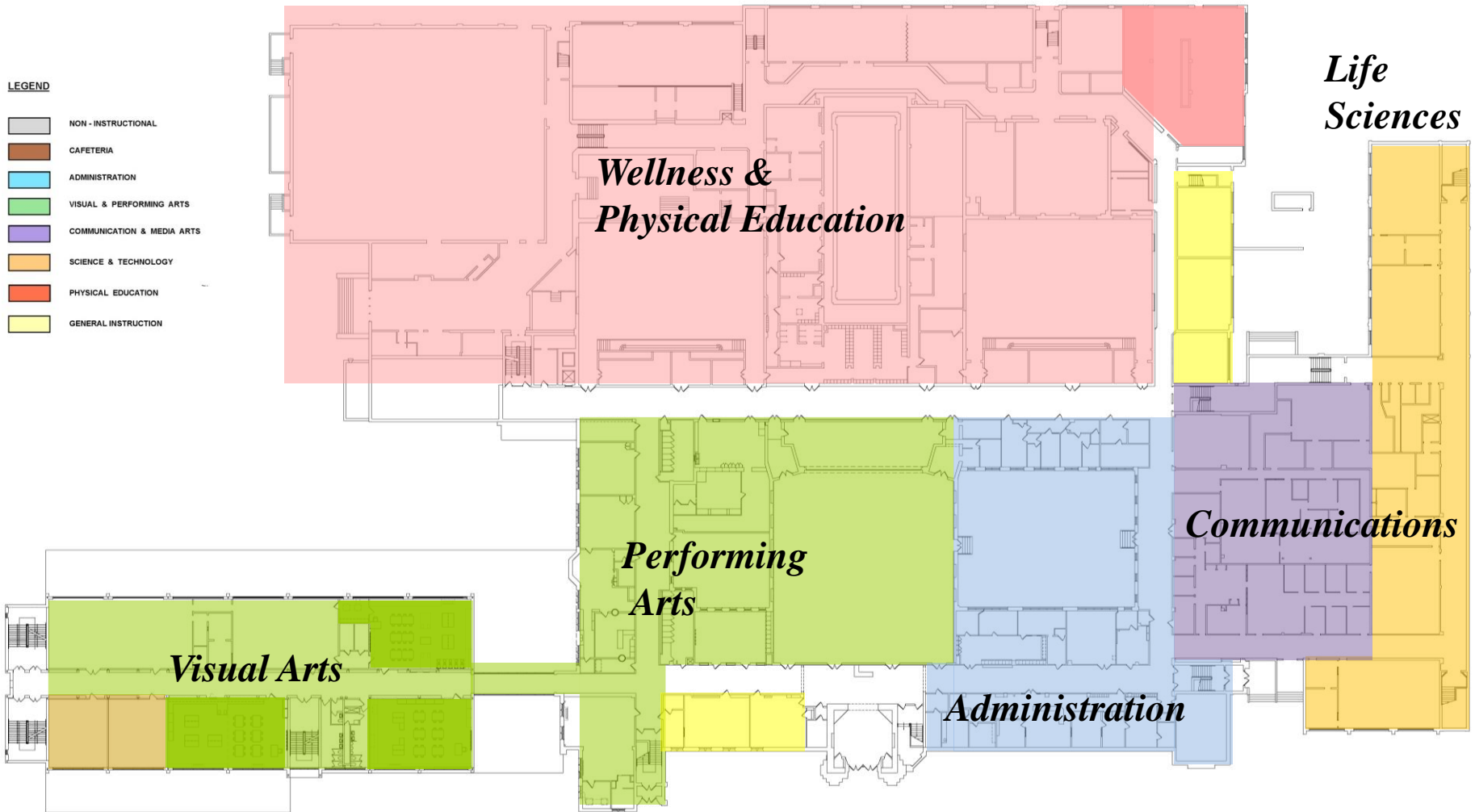
LEGEND

- NON - INSTRUCTIONAL
- CAFETERIA
- ADMINISTRATION
- VISUAL & PERFORMING ARTS
- COMMUNICATION & MEDIA ARTS
- SCIENCE & TECHNOLOGY
- PHYSICAL EDUCATION
- GENERAL INSTRUCTION



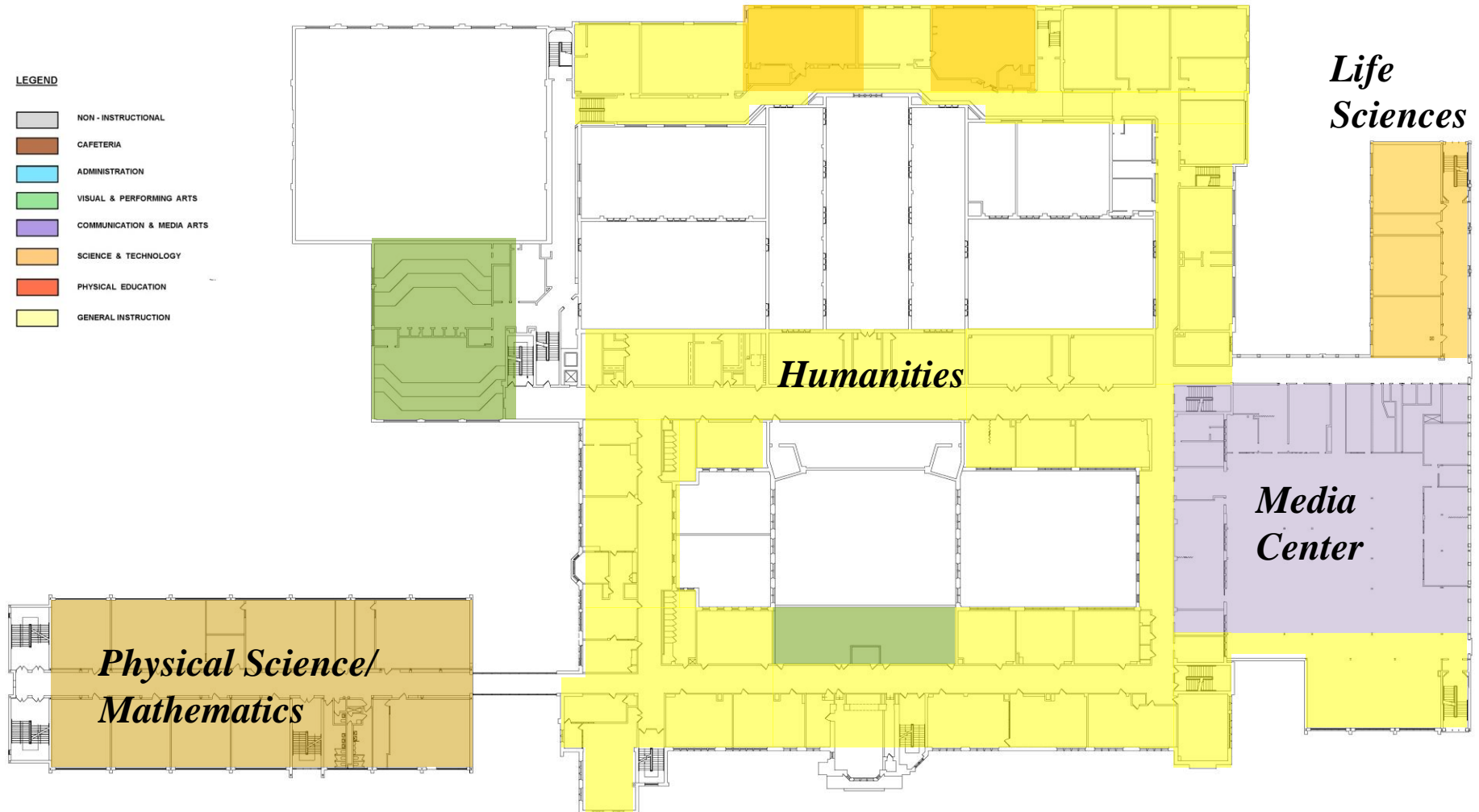
Columbia High School

Ultimate Proposed Master Plan – First Floor Plan



Columbia High School

Ultimate Proposed Master Plan – Second Floor Plan

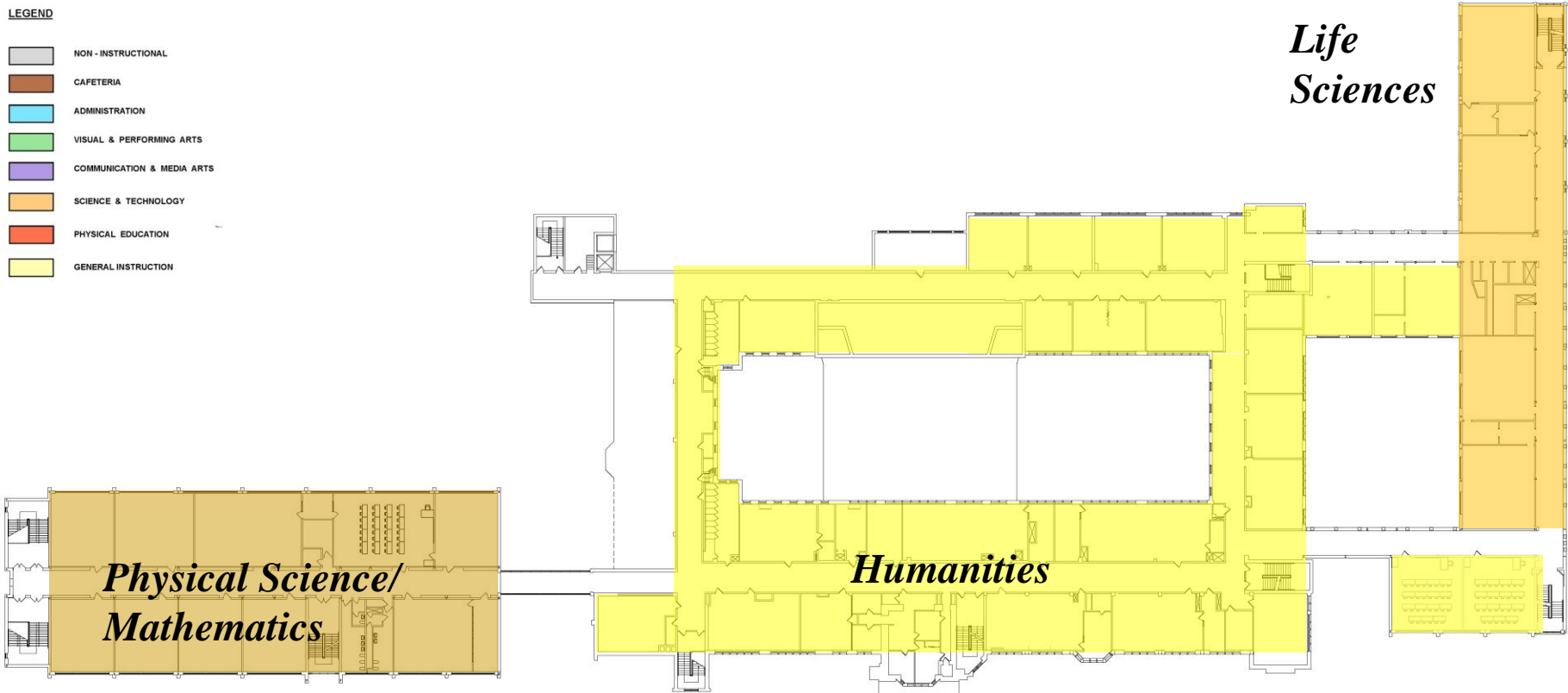


Columbia High School

Ultimate Proposed Master Plan – Third Floor Plan

LEGEND









- NON-INSTRUCTIONAL
- CAFETERIA
- ADMINISTRATION
- VISUAL & PERFORMING ARTS
- COMMUNICATION & MEDIA ARTS
- SCIENCE & TECHNOLOGY
- PHYSICAL EDUCATION
- GENERAL INSTRUCTION

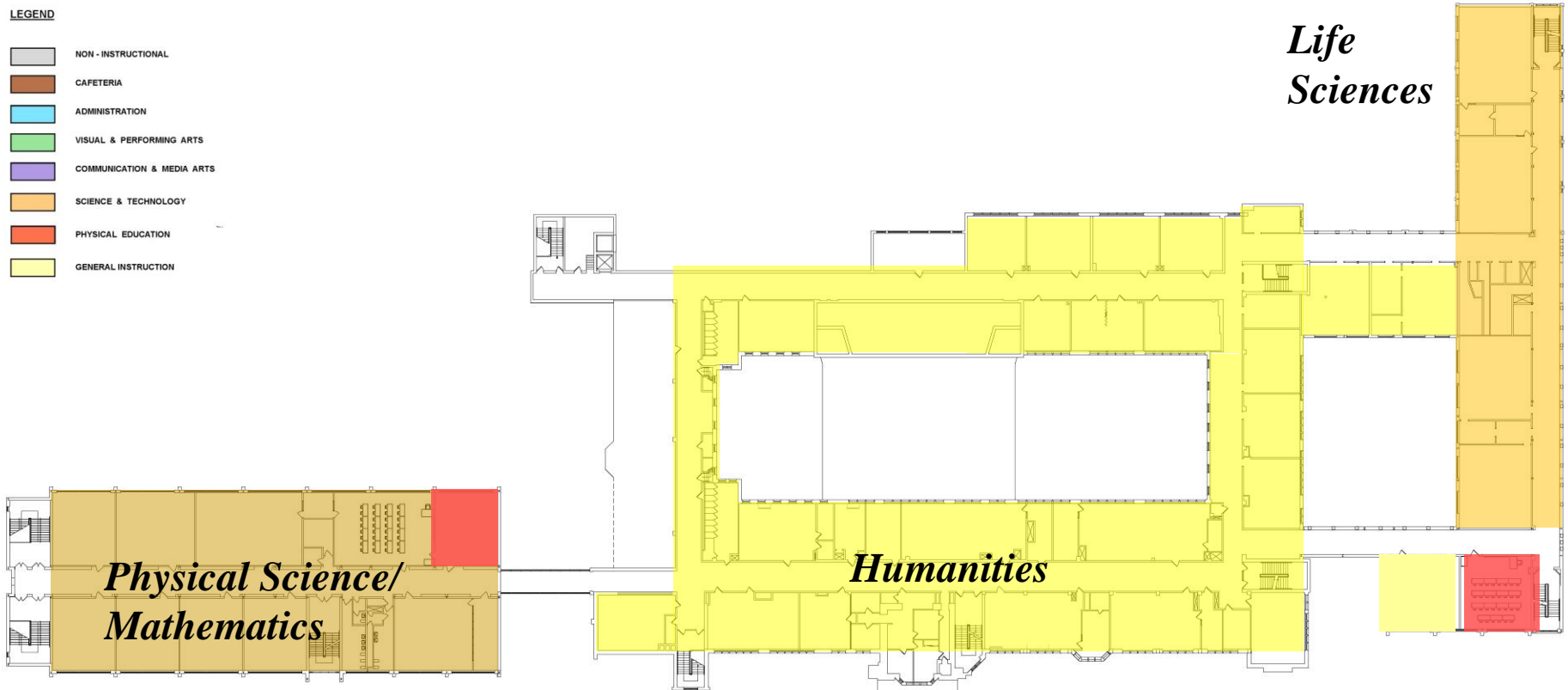


Columbia High School

Summer 2014 Room Changes – Third Floor Plan

LEGEND

	NON - INSTRUCTIONAL
	CAFETERIA
	ADMINISTRATION
	VISUAL & PERFORMING ARTS
	COMMUNICATION & MEDIA ARTS
	SCIENCE & TECHNOLOGY
	PHYSICAL EDUCATION
	GENERAL INSTRUCTION

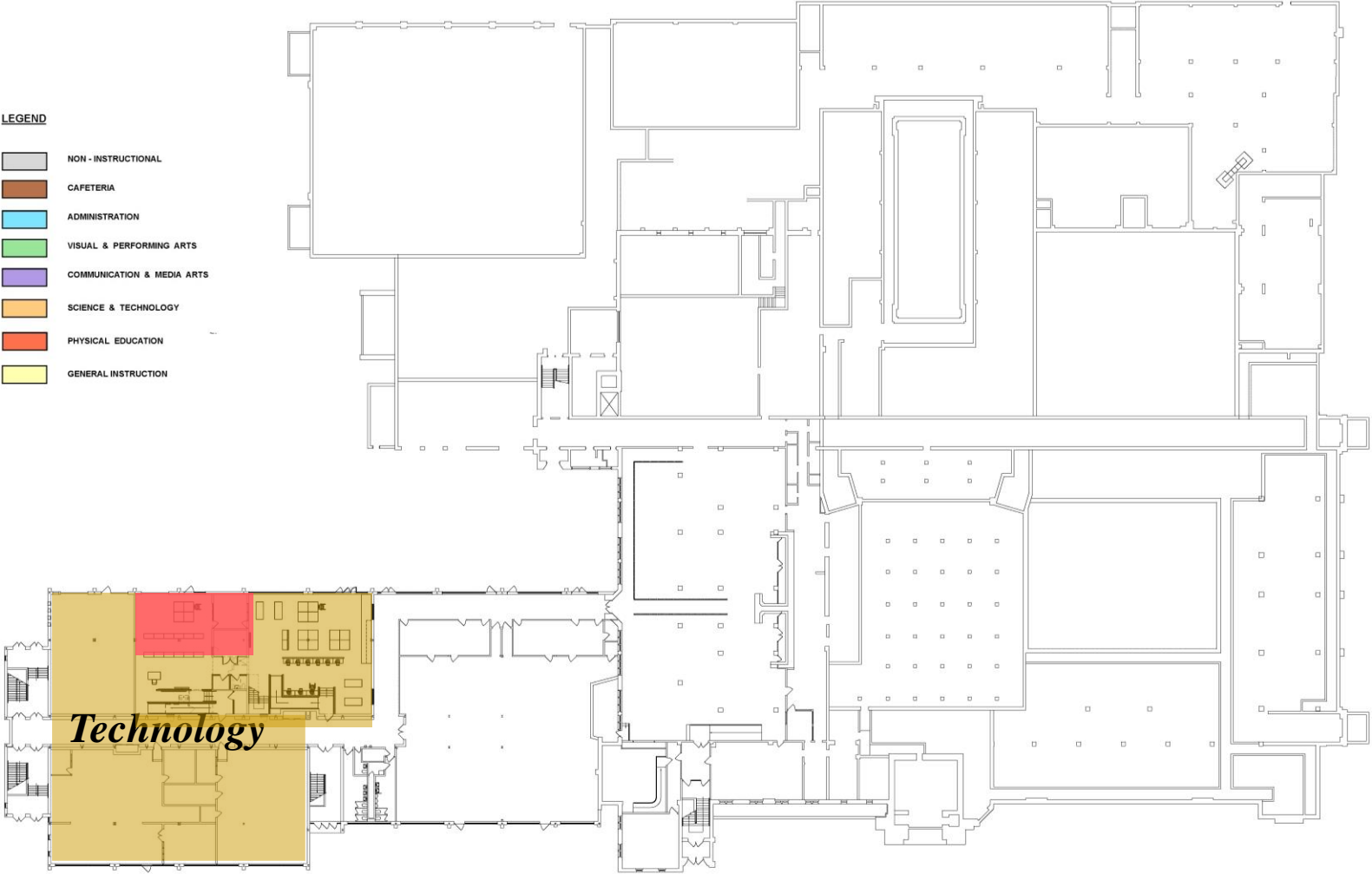


Columbia High School

Summer 2014 Room Changes - Lower Level Floor Plan

LEGEND

- NON - INSTRUCTIONAL
- CAFETERIA
- ADMINISTRATION
- VISUAL & PERFORMING ARTS
- COMMUNICATION & MEDIA ARTS
- SCIENCE & TECHNOLOGY
- PHYSICAL EDUCATION
- GENERAL INSTRUCTION



COLUMBIA HIGH SCHOOL RENEWAL

NEXT STEPS:

- Staff input:
 - response to proposal
 - architect for room design
 - furniture, as needed
- Finalize proposed moves
 - Share with BOE's facility committee
 - DOE Submittals as needed
- Plan for Summer 2015

